



1 Malthouse Cottages, Church Lane, Eastergate,  
PO20 3UR

£350,000 Freehold



3 Bedrooms



2 Bathroom



2 Reception Rooms

*SW*

Sims Williams

## Key Features

- For Sale By Method of Modern Auction
- Grade II Listed Cottage
- Sitting Room With Working Fireplace
- Separate Dining Room
- Kitchen Onto Garden
- 3 Double Bedrooms
- Modern Family Bathroom
- 2nd Floor Principle Bedroom Suite
- Part Walled Garden

## EPC Rating

Current = D  
Potential = B

## Council Tax Band

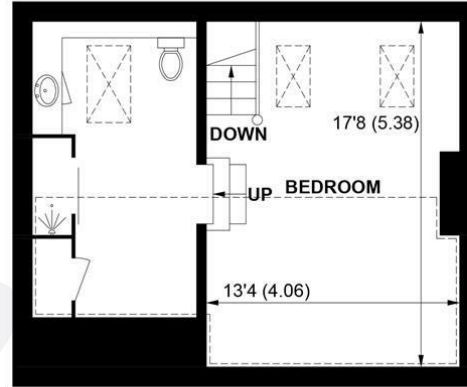
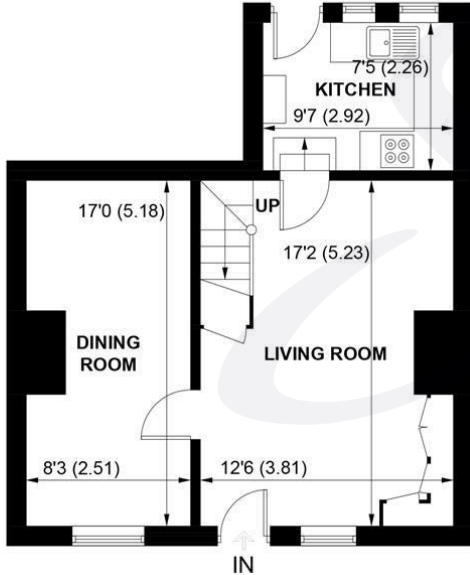
Band = D

## Tenure - Freehold

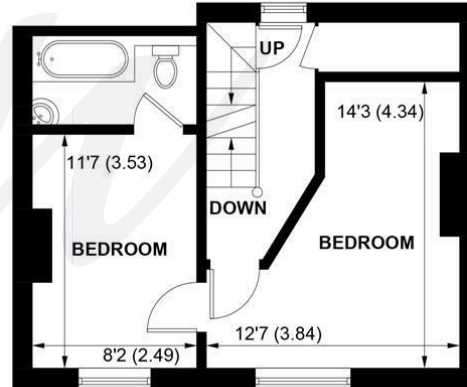




 = REDUCED HEAD HEIGHT BELOW 1.5M



**SECOND FLOOR**



**FIRST FLOOR**

**APPROXIMATE GROSS INTERNAL AREA = 1152 SQ FT / 107.0 SQ M**

**NOT TO SCALE (For illustrative purposes only as defined by RICS Code of Measuring Practice) 2024 ©**

**Produced for Sims Williams**



[simswilliams.co.uk](http://simswilliams.co.uk)

#### CHICHESTER

---

8-9 Southgate

Sales 01243 787868

Lettings 01243 836055

[chichester@simswilliams.co.uk](mailto:chichester@simswilliams.co.uk)

#### WALBERTON

---

5 Maple Parade

Sales 01243 551368

Lettings 01243 836055

[walberton@simswilliams.co.uk](mailto:walberton@simswilliams.co.uk)

#### ARUNDEL

---

8a High Street

Sales 01903 885678

Lettings 01903 881133

[arundel@simswilliams.co.uk](mailto:arundel@simswilliams.co.uk)

#### BOGNOR REGIS

---

46 High Street

Sales 01243 862626

Lettings 01243 836055

[bognor-regis@simswilliams.co.uk](mailto:bognor-regis@simswilliams.co.uk)

Viewing Strictly by arrangement via the vendor's agent Sims Williams 01243 551368. These particulars are believed to be correct but their accuracy is not guaranteed and they do not form part of any contract.